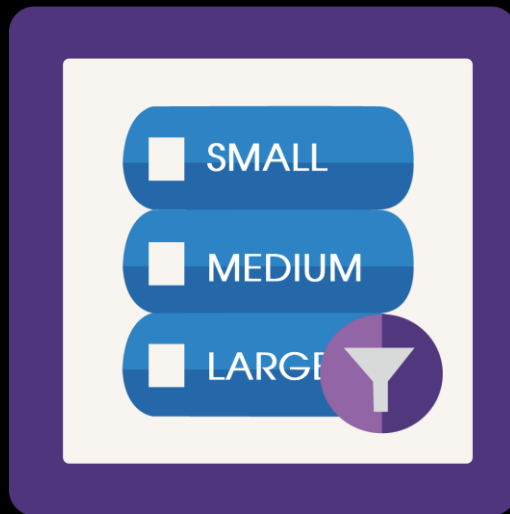


Filter on stock App

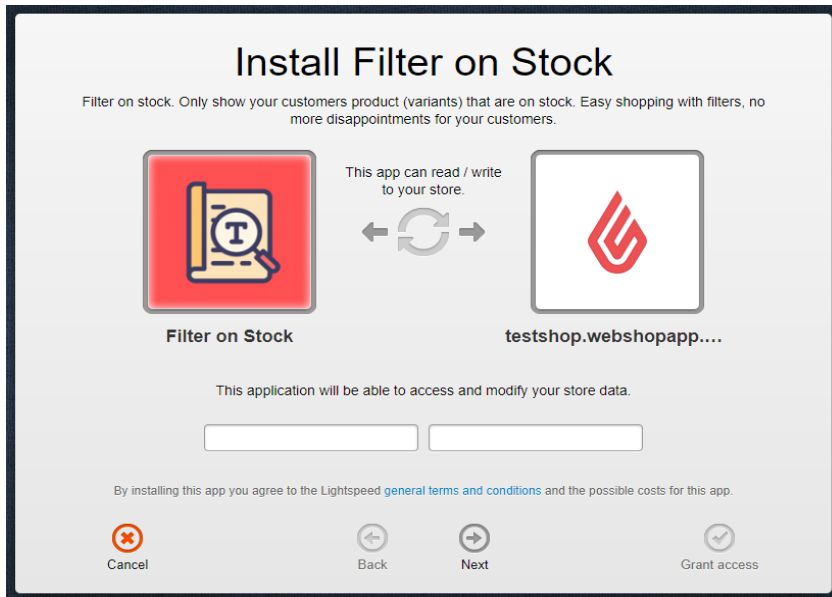


CM **DC**

Step 1. Installing the Filter on stock APP

Search the Appstore for the app.

If you want to install the app, click on the “install” button and follow the guided installation steps.



When the app is installed, you'll be redirected to the page shown below, where you can enter the e-mail address of the user that will use the app. As soon as you've entered your email address, we'll continue the installation process in the background and we'll let you know when the installation is done. If it's your first app by CMDC, we'll also include your password in the confirmation email.



NOTE: Depending on the amount of products you have in your shop, it might take several minutes for the email to be send.

For questions you can contact us
Via: info@cmdc.eu



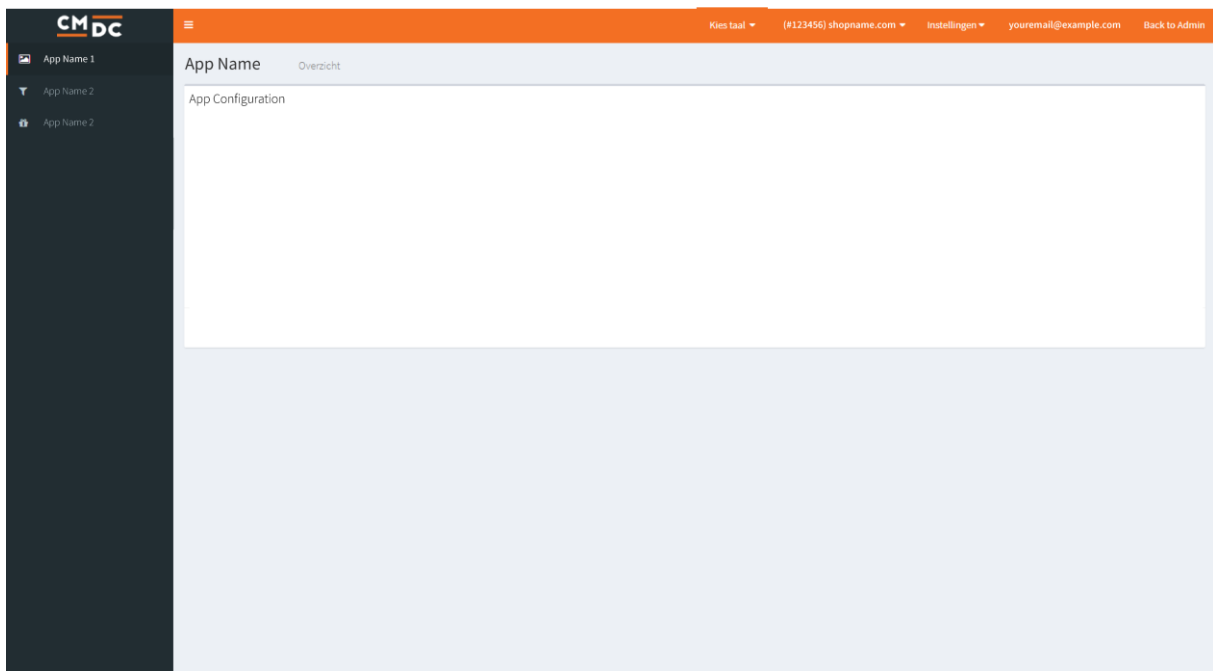
Step 2. The APP framework from CMDC

Welcome to the CMDC appframework.

CMDC has created a framework, where you'll be able to configure all the apps that are made by CMDC, which you have installed. After installing the app from Lightspeed, you'll receive an email with your password on the email address you've supplied.

Every next app of CMDC you install, while using the same email address, will be added to your menu. You'll still receive an e-mail when the installation is complete, but you'll be able to login with your same login details.

Do you own multiple shops? No problem, you can still add all the apps to the different stores using the same email address. You'll then be able to switch shop and language. By clicking on your email address you'll be able to change your password.



For questions you can contact us
Via: info@cmdc.eu



Step 3. Adding and customizing the Filter on stock APP

The Filter on stock app ensures that filter values are only linked to products that are in stock. This prevents disappointed customers.

Before configuring the app make sure all filters and filter values you want to use are configured in Lightspeed.

When you navigate to the app you will see an overview of all variants on the page. These variants can be linked to the filter values in this overview. You can do this by going to the variant that you want to link and clicking in the filter value field. A dropdown will appear with all available filter values. You can search for the value by typing in the field. Click on the filter value you want to link to the variant. It is possible to link multiple values to one variant. The app will ensure that when the variant is in stock the filter value will be linked and when the variant is not in stock the filter value will be unlinked.

For example, you have a product called shirt with the variants S, M and L. In the app we will link the variant "S" to the filter value "Size: S", link the variant "M" to the filter value "Size: M" and link the variant "L" to the filter value "Size: L". At first all variants are in stock so the app will ensure all filter values are linked to the product. When a customer filters on "Size M" the product shirt will be shown. Later the variant "M" of shirt will be out of stock. When the variant is out of stock the filter value will be unlinked. If a customer filters on "Size M" now the shirt will not be shown.

If you have a lot of variants in your shop you have the ability to filter the variants. At the top of the page on the left side you can enter a name of the variant in the input field. The overview of variants will automatically be filtered.

If you have recently updated your filter values in Lightspeed and they have not appeared in the app yet you can manually update the filters. You can do this by clicking the "Update filters" button at the top of the page on the right. The app will retrieve the filters from Lightspeed on the background.

The screenshot shows the configuration interface for the Filter on stock app. It is divided into three main sections:

- Filter variants:** Contains a text input field labeled "Variant:" for filtering the list of variants.
- Settings:** Includes a "Settings" button and a note: "Additional settings can be configured by clicking the button below."
- Update filters:** Includes an "Update Filters" button and a note: "Click this button to get an updated list of filters and filter values from your shop. The new information will be downloaded in the background."

Below these sections is a table titled "Link variants to filtervalues":

Variant	Filtervalue(s)
L	<input type="text" value="x Size: L"/>
M	<input type="text" value="x Size: M"/>
S	<input type="text" value="x Size: S"/>

Settings

When you click on the button “Settings” you will navigate to this page. On this page you can configure the app to your liking.

Enable filter values when

In this setting you can configure when a filter value is linked to a product. By default this setting is set to the option “A variant is on stock”. Which means that when the variant is out of stock the filter value will be unlinked.

The other option is “A variant is orderable”. If this option is chosen the filter value will be linked when a variant is available to order. If a variant is unavailable to order the filter value will be unlinked.

Filters to manage

In this setting you can configure whether specific filters will exclusively be managed by the app.

By default the app only links filter values to a product when a variant of the product is linked to a filter value. If no variants are linked to a filter value the app will do nothing. This means the app will no longer link or unlink a filter value. This makes it possible to manually manage filter values in Lightspeed.

The result of this is that if a filter value is still linked to a specific product that it will never be unlinked by the app. This can happen when a filter value is linked manually, links are changed between filter values and variants or when a Lightspeed variant is deleted.

If a specific filter will only be managed by the app you can enable this setting. The app shall unlink all filter values from the filter that are not managed by the app. This does mean that no filter values of the filter can be managed manually in Lightspeed.

Generic ‘on stock’ filter

In this setting you can configure a generic “On stock” filter. You select the filter value you want to use as “On stock” filter value. When a customer filters on that value only products in stock will be shown.

The screenshot shows the 'Settings' page with three distinct sections, each with a 'Save' button:

- Enable filter values when:** A dropdown menu is set to 'A variant is on stock'.
- Filters to manage:** Includes explanatory text and two checkboxes: 'Color' and 'Size', both of which are currently unchecked.
- Generic 'on stock' filter:** A dropdown menu is currently empty.