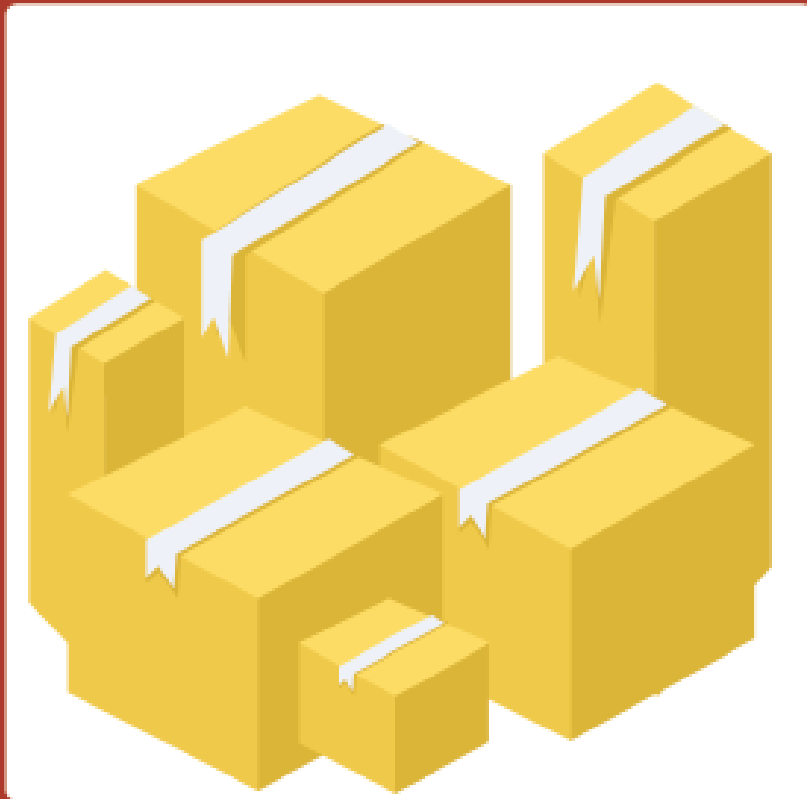


Combi product App

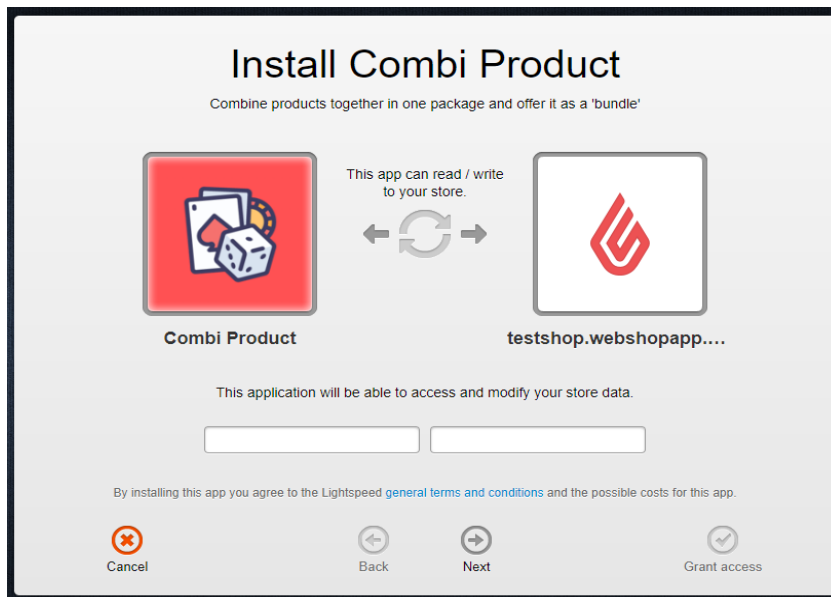


CM **DC**

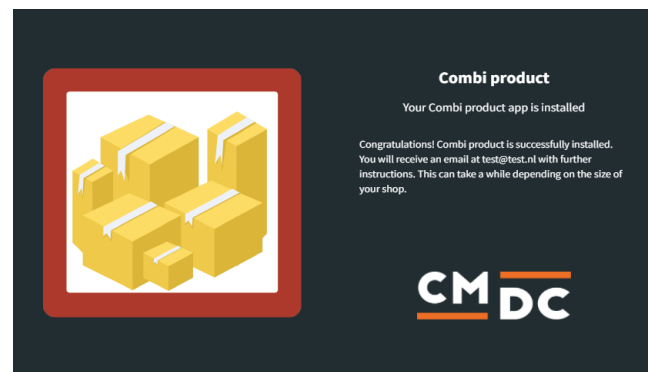
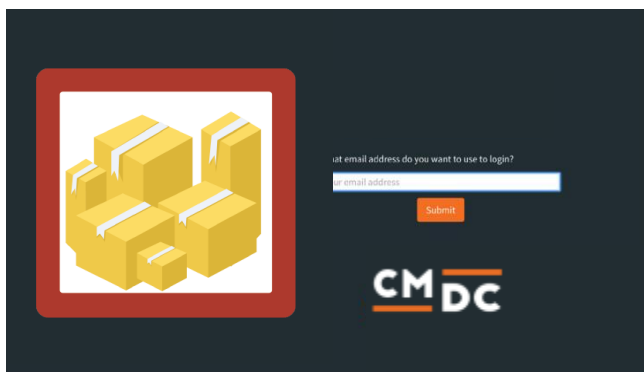
Step 1. Installing the Combi product APP

Search the Appstore for the app.

If you want to install the app, click on the “install” button and follow the guided installation steps.



When the app is installed, you'll be redirected to the page shown below, where you can enter the e-mail address of the user that will use the app. As soon as you've entered your email address, we'll continue the installation process in the background and we'll let you know when the installation is done. If it's your first app by CMDC, we'll also include your password in the confirmation email.



NOTE: Depending on the amount of products you have in your shop, it might take several minutes for the email to be send.

For questions you can contact us
Via: info@cmdc.eu



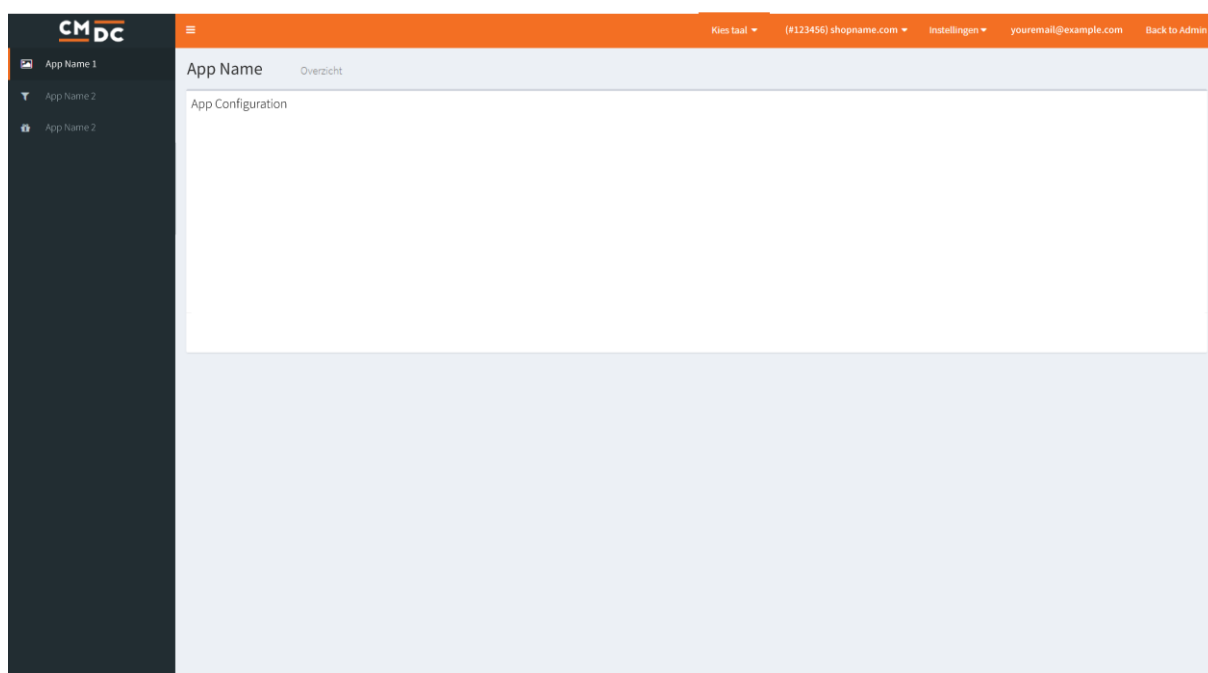
Step 2. The APP framework from CMDC

Welcome to the CMDC appframework.

CMDC has created a framework, where you'll be able to configure all the apps that are made by CMDC, which you have installed. After installing the app from Lightspeed, you'll receive an email with your password on the email address you've supplied.

Every next app of CMDC you install, while using the same email address, will be added to your menu. You'll still receive an e-mail when the installation is complete, but you'll be able to login with your same login details.

Do you own multiple shops? No problem, you can still add all the apps to the different stores using the same email address. You'll then be able to switch shop and language. By clicking on your email address you'll be able to change your password.



For questions you can contact us
Via: info@cmdc.eu



Step 3. Adding and customizing the Combi product APP

The Combi product app gives you the ability to combine products into one combined package. The stock of the main variant will be determined by the stock of underlying variants. When a main variant is ordered the stock of the underlying variants will be changed.

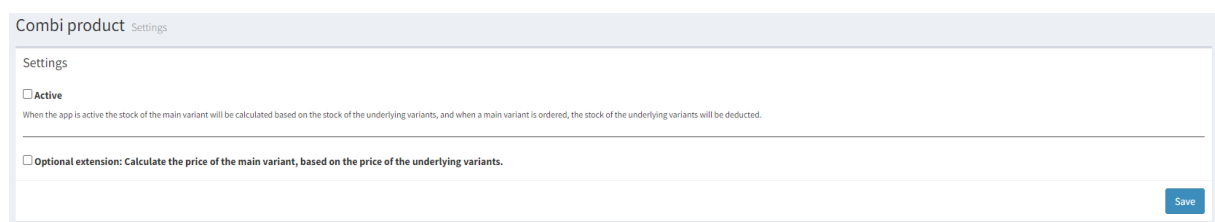
Settings

Active

Tick the box of this setting to activate the Combi product app. When the app is active it will keep track of the main variants and when a main variant is sold the stock of the underlying variants will be updated.

Optional extension: Calculate the price of the main variant, based on the price of the underlying variants.

The Combi product app offers the possibility to extend the app with extra functionality. This extension will calculate the main variant price by adding up the prices of the underlying variants. It also makes it possible to give specific combi products a discount.



Combi products

On this page the combi products can be managed. You will see an overview of all previous configured combi products and it is possible to add combi products.

When you add a combi product you need to configure a main variant. First configure the product field by searching for the product you want as main variant and selecting this product. Next you need to choose the variant you want as main variant.

When the main variant is configured you can configure the underlying variants. First select the product and after that select the variant. Enter the amount of the variant you want in the package in the quantity field. When you click on the "Add variant" button a new row will appear where you can configure another variant. Variants can also be deleted by clicking on the "x" button.

Extension: Calculate price

When you have activated the extension an additional setting will appear for the combi products. You can configure for each combi product whether the price should be calculated from the prices of the underlying variants and you can configure a discount on this price. For the absolute discount you need to enter the amount of absolute discount you want to give in the absolute discount field. For a percentage discount you need to enter the amount of percentage discount you want to give in the percentage discount field. After changes to the calculate price settings it can take a couple of minutes before the changes in price are updated in Lightspeed.

Combi product Update combi product

Main variant

Product
Garden set

Variant
Default

[Save](#)

Calculate price

Calculate the price based on the underlying variants

Absolute discount
Including VAT 0

Percentage discount 0

[Save](#)

Underlying variants

Product	Variant	Quantity	Action
Chairs	Default	4	✕
Table	Default	1	✕

[Add variant](#)

[Save](#)

For questions you can contact us
Via: info@cmdc.eu

